

Preliminary Map of Vegetation Communities in the Northern Section of the North Creek Forest

Map interpretation:

The vegetation communities in this map were created and delineated in the field using subjective judgments. Community boundaries were smoothed in GIS to accommodate reasonable visual representation and thus boundary locations are approximate. No quantitative data were gathered on plant species and thus the vegetation communities should be considered preliminary. The vegetation communities used follow the U.S. National Vegetation Classification scheme or the Washington Natural Heritage Program Puget Trough Plant Associations, or a modification of these to accommodate patterns seen during the field mapping.



Figure 1. Parcel boundaries of the North Creek Forest and study area (Image resources: ESRI, Bing Maps, City of Bothell).

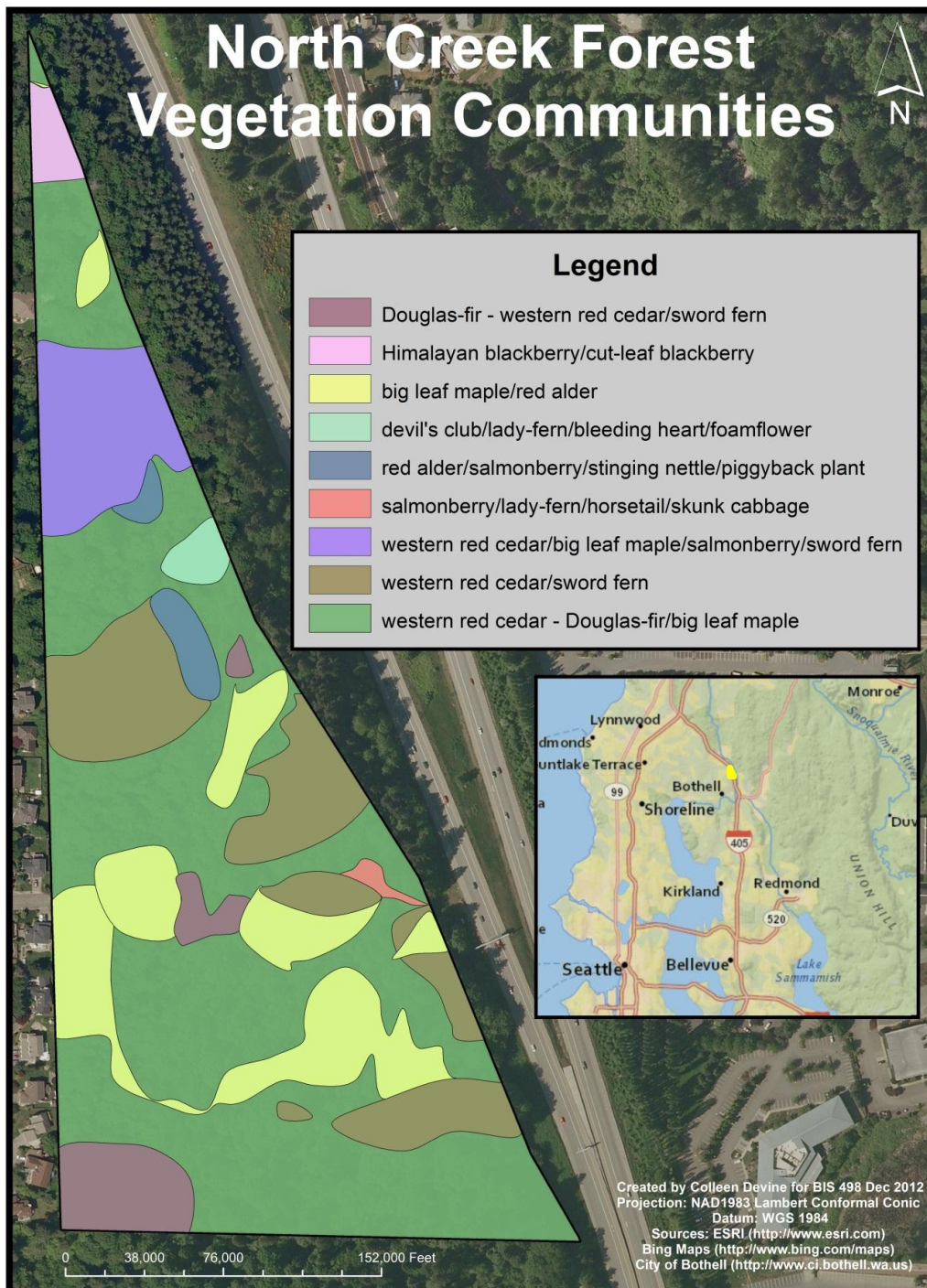


Figure 2. Vegetation communities in the North Creek Forest.

Credits:

Author: Colleen Devine; Field and GIS Assistance: Maki Dalzell, Warren Gold, Santiago Lopez; Map and Image Resources: ESRI, Bing Maps, City of Bothell